



Beautiful Lifestyle Innovations

DRY CONTACT INPUT RTS TRANSMITTER #1810493SI

The Dry Contact to RTS Interface can be used to communicate between home automation or other third-party systems and SOMFY's RTS Motors and controls. It functions as a single channel transmitter and accepts dry contact inputs. Once a direction is activated, an RTS radio command is sent to the screen or shade.

MECHANICAL SPECIFICATIONS

Overall Dimensions: L: 6 in. W: 4 ¼ in. D: 2 ¼ in.

Typical Range (Optimal Conditions): 65 ft.

ELECTRICAL SPECIFICATIONS

Power: 3v Lithium battery CR2430

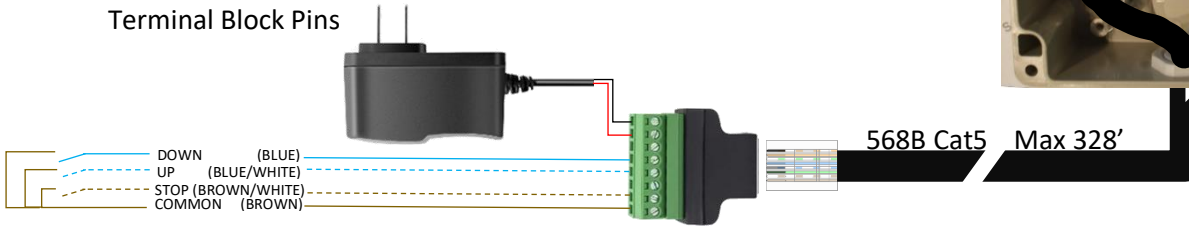
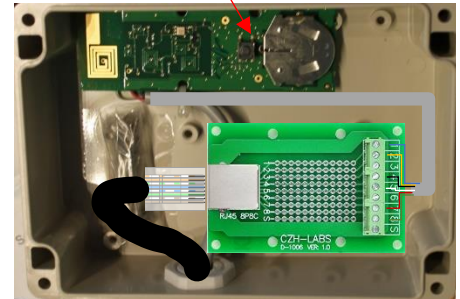
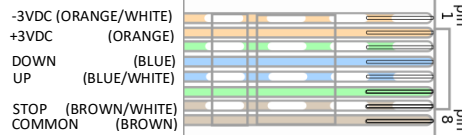
Frequency: 433.42 Mhz

RTS Programming Button



Terminal Block Pins

CAT5 PIN OUT (568B)



OPERATING INSTRUCTIONS

1. Place the RTS compatible motor or control in programming mode as described in the individual product operating instructions.
2. Press the programming button on the RTS Interface to program it in the memory of the RTS motor or control.
3. To activate an UP command, a momentary contact (relay) closure is required between the BLUE&WHITE (UP) and BROWN (Common Ground) wires.
4. To activate a DOWN command, a contact closure is required between the BLUE (DN) and BROWN (Common Ground) wires.
5. To activate a STOP command or Intermediate Position, a contact closure is required between the BROWN&WHITE (ST) and BROWN (Common Ground) wires.
6. Connect the Attached power supply ORANGE (+3VDC) and ORANGE&WHITE (-3VDC)